



HEART SCIENCES CENTER

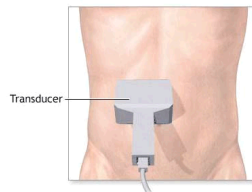
3420 SOUTH MERCY ROAD SUITE 312 GILBERT, AZ 85297

WWW.HEARTSCIENCESCENTER.COM

RENAL ARTERY DUPLEX IMAGING

What is Renal Artery Duplex Imaging?

There are two kidney arteries (one on the right and one on the left) that take blood from the aorta to your kidneys. These are called your renal arteries. Renal Artery Duplex Imaging is a combination of ultrasound images (pictures) and Doppler ultrasound (sounds). Ultrasound imaging of the renal arteries shows the type of plaque, the location and the extent of the disease within these arteries. Doppler ultrasound analyzes the blood flow in the renal arteries. This is a painless procedure. The technologist will apply a small amount of gel to the skin of your abdomen and will place an ultrasound probe on this gel. You may hear sounds of blood flowing through your kidney (renal) arteries.



Why do I need to have this procedure done?

To detect narrowing and or plaque in the arteries that supply blood to your kidneys.

How should I prepare for the procedure?

- Do not eat any greasy foods the night before or the morning of the test. This will prevent gas to build up in your abdomen and block the images during the test.
- Don't eat any food for at least 8 hours prior to the test.
- Don't smoke or use any form of nicotine for 2 hours before the test.
- Do drink 36 ounces (4 cups) of water 1 hour before the test.
- You will need to lie very still during the procedure.

Is there anything specific to do after the test?

No special care is required after the test. You may return to your usual activity level and diet, unless the doctor has instructed you otherwise.

Please don't hesitate to call our office at (480) 612.0400 if you have any questions or concerns.